



Consolidated Test Report

SAMPLE INFORMATION:

Sample Description : **Smart Self-balancing Scooter**
Trademark : **N/A**
Model Number : **X1S6.5**
X1L6.5, X1S 8, X1L8.
Manufacturer : **Shenzhen Huanxi Technology Co., Ltd**
Manufacturer Address : **3/F, Building 3, Minxing Industrial Zone, Minkang RD, Minzhi ST., Longhua, Shenzhen China.**

CLIENT INFORMATION:

Applicant : **Shenzhen Huanxi Technology Co., Ltd**
Applicant Address : **3/F, Building 3, Minxing Industrial Zone, Minkang RD, Minzhi ST., Longhua, Shenzhen China.**
Test Standard : **IEC62321-1:2013**
Comment : **The data shown in this consolidated test report did not exceed the limits of RoHS Directive 2011/65/EU, and its amendment directives.**
Issue Date : **Sep. 11, 2015**

REMARKS:

1. The test data obtained and the report issued by laboratories other than BCTC are provided by the applicant to us for data consolidation purposes. The report shall not be reproduced in part without written approval of us.
2. Characterization & Condition of sample: Normal.

Approved by: _____

Casey WangDate: Sep. 11, 2015



Consolidated Test Report

No.	Component	Test Lab	Report No.& Issue Date	Test Data(ppm)
1	ALUMINUM ELECTROLYTIC CAPACITOR	SGS	CANEC1302481101 2013-03-07	Cd: N.D. Pb: 9 Hg: N.D. Cr ⁶⁺ : N.D. PBBS: N.D. PBDES: N.D.
2	YELLOW WIRE	SGS	CANEC1306721303 2013-05-20	Cd: N.D. Pb: N.D. Hg: N.D. Cr ⁶⁺ :N.D. PBBS: N.D. PBDES: N.D.
3	RED WIRE	SGS	CANEC1306721301 2013-05-20	Cd: N.D. Pb: N.D. Hg: N.D. Cr ⁶⁺ :N.D. PBBS: N.D. PBDES: N.D.
4	BLACK WIRE	SGS	CANEC1306956801 2013-05-20	Cd: N.D. Pb: N.D. Hg: N.D. Cr ⁶⁺ :N.D. PBBS: N.D. PBDES: N.D.
5	BLUE WIRE	SGS	CANEC1306721303 2013-05-20	Cd: N.D. Pb: N.D. Hg: N.D. Cr ⁶⁺ :N.D. PBBS: N.D. PBDES: N.D.



Consolidated Test Report

No.	Component	Test Lab	Report No.& Issue Date	Test Data(ppm)
6	HEAT-SHRINKABLE TUBE	SGS	CANEC1400271202 2014-01-14	Cd: N.D. Pb: N.D. Hg: N.D. Cr ⁶⁺ : N.D. PBBS: N.D. PBDES: N.D.
7	IC	SGS	SHAEC1402687703 2014-03-06	Cd: N.D. Pb: 19 Hg: N.D. Cr ⁶⁺ : N.D. PBBS: N.D. PBDES: N.D.
8	POLYMER LITHIUM ION BATTERY	SGS	CANEC1309145801 2013-06-24	Cd: N.D. Pb: N.D. Hg: N.D. Cr ⁶⁺ : N.D.
9	POWER CORD	SGS	GZ1103022223A/CHEM 2011-04-20	Cd: N.D. Pb: N.D. Hg: N.D. Cr ⁶⁺ : N.D. PBBS: N.D. PBDES: N.D.
10	CABLE TIES	SGS	CANML1307538101 2013-05-30	Cd: N.D. Pb: N.D. Hg: N.D. Cr ⁶⁺ : N.D. PBBS: N.D. PBDES: N.D.



Consolidated Test Report

No.	Component	Test Lab	Report No.& Issue Date	Test Data(ppm)
11	BLUE PLASTIC	SGS	CANEC1316035801 2013-10-24	Cd: N.D. Pb: N.D. Hg: N.D. Cr ⁶⁺ : N.D. PBBS: N.D. PBDES: N.D.
12	BLACK PLASTIC	CTI	RHS01G004483005E 2014-03-04	Cd: N.D. Pb: 14 Hg: N.D. Cr ⁶⁺ : N.D. PBBS: N.D. PBDES: N.D.
13	SCREW	SGS	CANEC1316900509 2013-11-07	Cd: N.D. Pb: N.D. Hg: N.D. Cr ⁶⁺ : N.D.
14	SMD RESISTOR	SGS	SHAEC1324969633 2014-01-03	Cd: N.D. Pb: 585 Hg: N.D. Cr ⁶⁺ : N.D. PBBS: N.D. PBDES: N.D.
15	SMD CAPACITOR	SGS	KA/2014/10558 2014-01-21	Cd: N.D. Pb: N.D. Hg: N.D. Cr ⁶⁺ : N.D. PBBS: N.D. PBDES: N.D.



Consolidated Test Report

No.	Component	Test Lab	Report No.& Issue Date	Test Data(ppm)
16	PCB	SGS	CANEC1310602801 2013-07-15	Cd: N.D. Pb: N.D. Hg: N.D. Cr ⁶⁺ :N.D. PBBS: N.D. PBDES: N.D.
17	SLIVERY METAL	SGS	SHAEC1403165812 2014-04-03	Cd: N.D. Pb: N.D. Hg: N.D. Cr ⁶⁺ :N.D. PBBS: N.D. PBDES: N.D.
18	TERMINAL BLOCK	SGS	SHAEC1304390803 2013-03-26	Cd: N.D. Pb: 10 Hg: N.D. Cr ⁶⁺ : N.D. PBBS: N.D. PBDES: N.D.
19	SMD TRANSISTOR	SGS	CKGEC1400013701 2014-01-22	Cd: N.D. Pb: N.D. Hg: N.D. Cr ⁶⁺ : N.D. PBBS: N.D. PBDES: N.D.
20	SPEAKER OF PLASTIC BASKET	SGS	CANEC1203218701 2012-03-21	Cd: N.D. Pb: N.D. Hg: N.D. Cr ⁶⁺ : N.D. PBBS: N.D. PBDES: N.D.



Consolidated Test Report

No.	Component	Test Lab	Report No.& Issue Date	Test Data(ppm)
21	WHITE PLASTIC	SGS	KE/2014/31159 2014-03-17	Cd: N.D. Pb: N.D. Hg: N.D. Cr ⁶⁺ : N.D. PBBS: N.D. PBDES: N.D.
22	SMD DIODE	SGS	SHAEC1321669505 2013-11-11	Cd: N.D. Pb: N.D. Hg: N.D. Cr ⁶⁺ : N.D. PBBS: N.D. PBDES: N.D.
23	RUBBER WASHER	CTI	RHS05F018312001C 2013-10-25	Cd: N.D. Pb: 36 Hg: N.D. Cr ⁶⁺ : N.D. PBBS: N.D. PBDES: N.D.
24	GREEN WIRE	SGS	CANEC1306721303 2013-05-20	Cd: N.D. Pb: N.D. Hg: N.D. Cr ⁶⁺ :N.D. PBBS: N.D. PBDES: N.D.
25	GREEN PLASTIC	SGS	CANEC1406660815 2014-05-13	Cd: N.D. Pb: N.D. Hg: N.D. Cr ⁶⁺ : N.D. PBBS: N.D. PBDES: N.D.



Consolidated Test Report

No.	Component	Test Lab	Report No.& Issue Date	Test Data(ppm)
26	TIN	SGS	CANEC1318489302 2013-11-30	Cd: N.D. Pb: 26 Hg: N.D. Cr ⁶⁺ : N.D.
27	YELLOW PLASTIC	SGS	CANEC1406660809 2014-05-13	Cd: N.D. Pb: N.D. Hg: N.D. Cr ⁶⁺ : N.D. PBBS: N.D. PBDES: N.D.
28	SMD POWER INDUCTOR	SGS	CANEC1210038501 2012-07-31	Cd: N.D. Pb: N.D. Hg: N.D. Cr ⁶⁺ : N.D. PBBS: N.D. PBDES: N.D.
29	WHITE PASTE	SGS	CANEC1306371502 2013-05-10	Cd: N.D. Pb: N.D. Hg: N.D. Cr ⁶⁺ : N.D. PBBS: N.D. PBDES: N.D.
30	TRANSFORMER-BOBBIN	SGS	CE/2013/43276 2013-04-22	Cd: N.D. Pb: 10 Hg: N.D. Cr ⁶⁺ : N.D. PBBS: N.D. PBDES: N.D.



Consolidated Test Report

NOTE:

- (1) Pb Limit=1000mg/kg, Cd Limit=100mg/kg, Hg Limit=1000mg/kg;
Cr⁶⁺ Limit=1000mg/kg ; PBBs Limit=1000mg/kg, PBDEs Limit=1000mg/kg
- (2) N.D. = not detected (<MDL)
- (3) MDL=Method Detection Limit
- (4) ppm = mg/kg
- (5) Conclusion:

The results shown on the report do not exceed the limit of the council of 8 June 2011 on the restriction of the use of certain hazards substances in electrical and electronic equipment under directive 2011/65/EU of the European parliament.

Consolidated Test Report

PHOTOGRAPHS OF SAMPLE AS RECEIVED

EUT Photo 1



EUT Photo 2

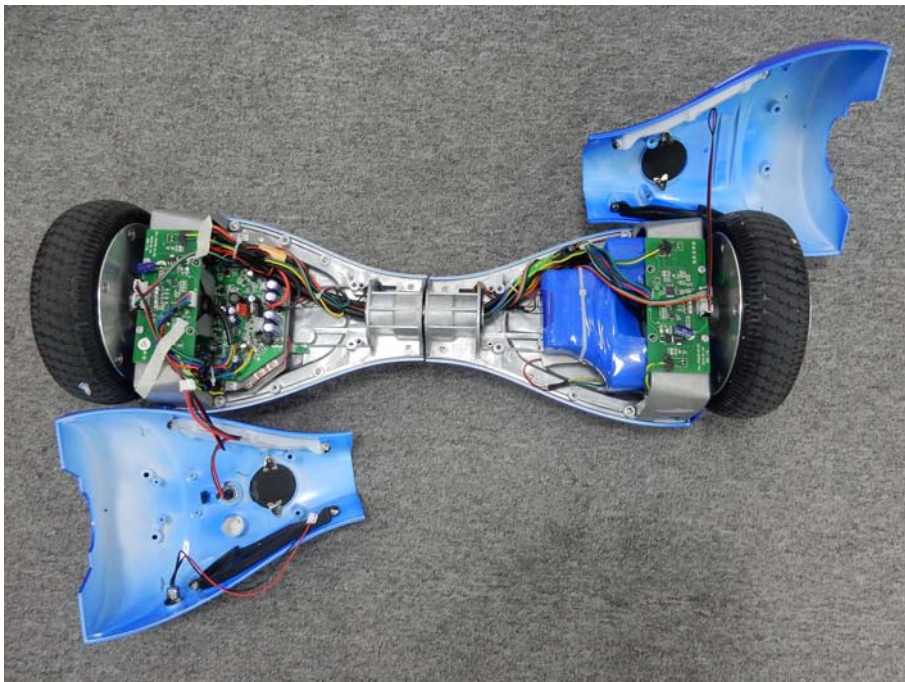


Consolidated Test Report

EUT Photo 3

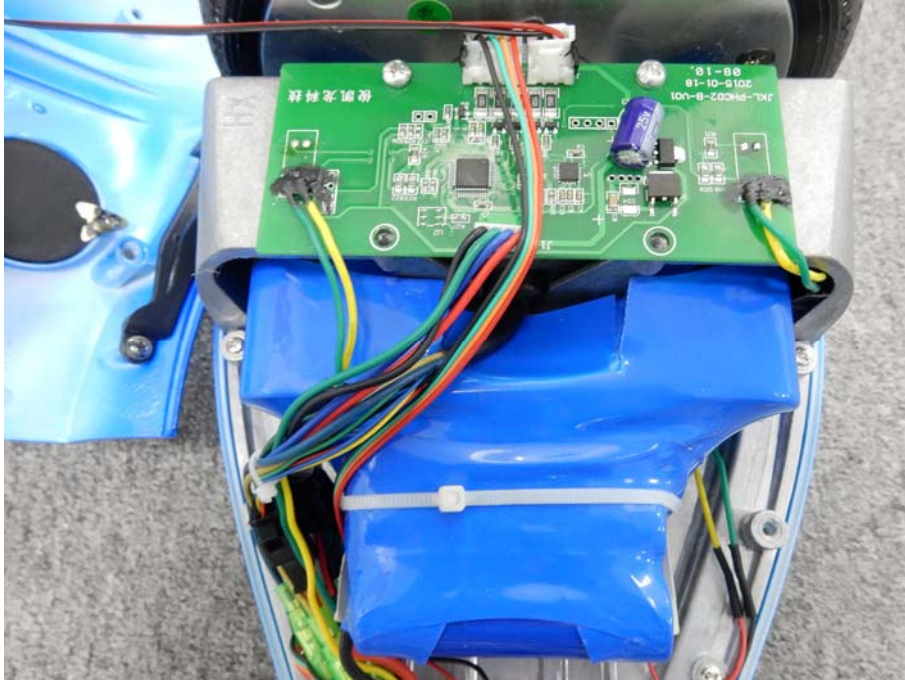


EUT Photo 4

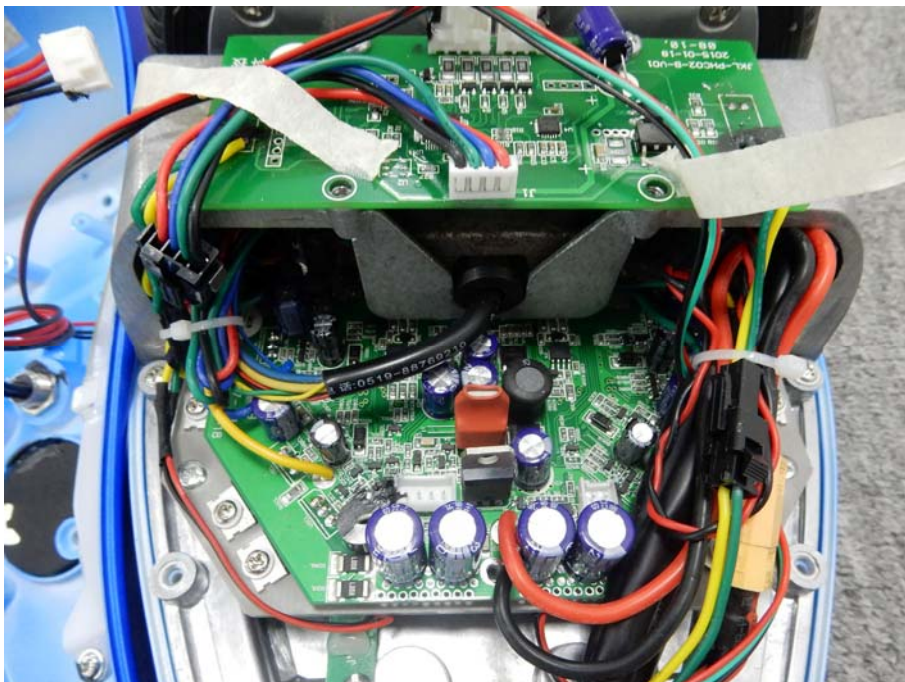


Consolidated Test Report

EUT Photo 5

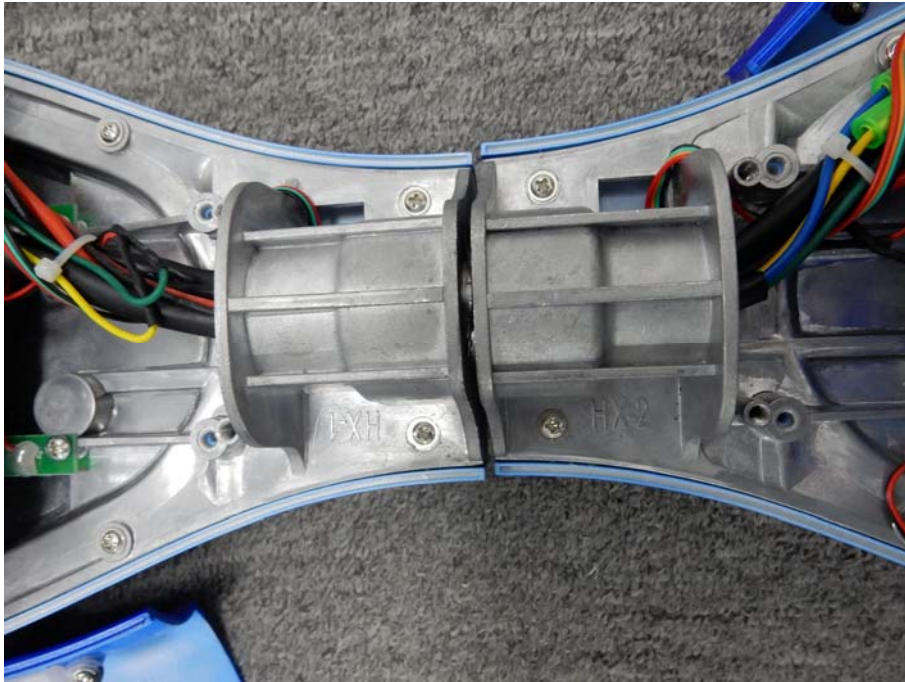


EUT Photo 6

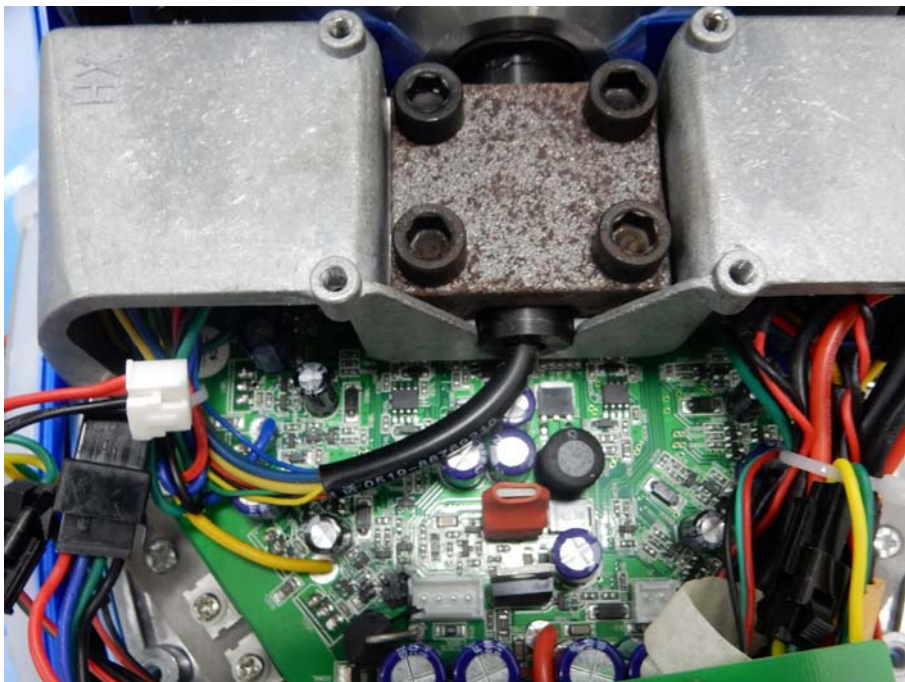


Consolidated Test Report

EUT Photo 7



EUT Photo 8



***** END OF REPORT *****